

# TORQUE TEST SETUP

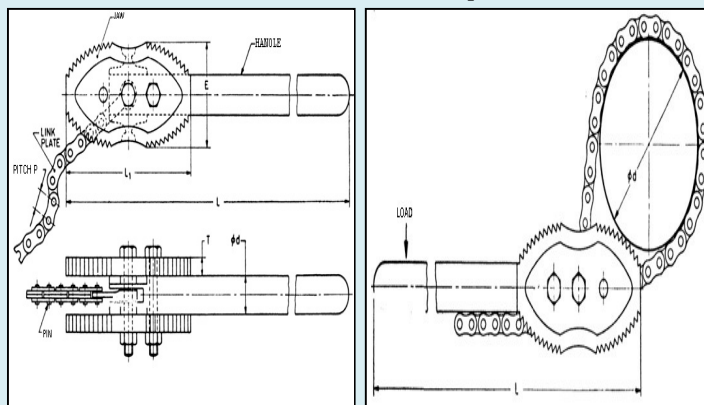
(IS 4003 PART1, IS 4003 PART2, IS 4123 & IS 10238)  
MODEL: PS/TTS-01

## PRIORITY SOLUTIONS

D-103, PHASE-VII, INDUSTRIAL AREA  
MOHALI –PUNJAB 160055 (IND)  
INDIA

MOBILE NO:9915553754/9815553754  
TELEPHONE : +91-0172-5093754

E-mail: [prioritysolutions@live.in](mailto:prioritysolutions@live.in)  
Website: [www.machinedparts.in](http://www.machinedparts.in)



## Technical Data

### 4. Technical Data

Model:	PS/BIS-TT01
Dimensions (max) overall dimensions (L-H-B):	1717 X 2200 X 870 mm
Weight overall	500 kg
Supply Voltage:	440V approx. / 50 Hz
Current consumption:	2.5 Ampere
Range of Load Cell:	1 ton
Hydraulic System Capacity:	700KgF
Chuck Holding Capacity:	Diameter 16mm to 300mm
Loading Point from Test bar Center point:	150 to 1300mm
Shock load provisions:	13,18,22 & 27Kg
Shock load locking height:	600mm
Bolt mounting distance from load point:	133mm
Control voltage:	24V DC $\pm$ 10%
Control method:	Control panel box

### WORKING PRINCIPLE OF MACHINE:-

This machine works as an Torque Testing apparatus for Chain wrench as per IS 4123:1982 with latest amendments, for Pipe wrench as per IS 4003(Part1 &2) with latest amendments for Step bolts as per IS 10238:2001 with latest amendments

#### **A. STATIC LOAD (IS 4003 PART1, IS 4003 PART2,IS 4123);**

Static load is to be applied at the handle of Chain/Pipe wrench at **varying distances** from the center of test specimen. The torque specification ranges from **180-6500 Nm**. The application of load point distance from centre of test specimen **varies** from 120-1300mm, depending upon the size of Wrench.

#### **B. STATIC SHOCK LOAD (IS 4003 PART1, IS 4003 PART2);**

Static Shock load of 13,18,22,27N (individually for different pipe wrenches) is to be applied only for Pipe Wrench testing. This static shock load is to be applied in conduction with the reduced static load.

#### **C. STATIC LOAD/CANTILEVER TEST OF 150 KG(IS 10238);**

Load is to be applied to M16 bolt near head, through thread/wire **after fastening the bolt to solid support**.

# Composition of Machine

The photograph illustrates the general assembly of the machine.

