

AIR LEAK TESTING MACHINE

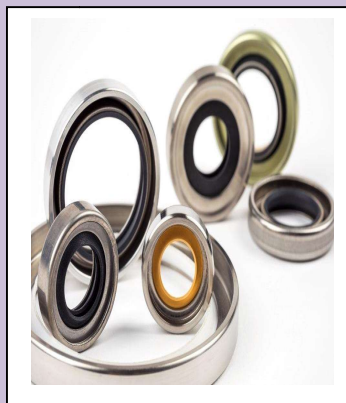
(MACHINE FOR CHECKING THE PRESENCE OR ABSENCE OF LEAKAGE)

PRIORITY SOLUTIONS

D-103, PHASE-VII, INDUSTRIAL AREA
MOHALI –PUNJAB 160055 (IND)
INDIA

MOBILE NO:9915553754/9815553754
TELEPHONE : +91-0172-5093754

E-mail: prioritysolutions@live.in
Website: www.machinedparts.in



Technical Specification and Operation

The machine is called **AIR LEAK TESTING MACHINE** used as a "MACHINE FOR CHECKING THE AMOUNT OF AIR LEAKAGE IN AN OIL SEALS"

3.1 Technical Data

Dimensions of max. overall dimensions (L-B-H):	570 X 750 X 1940 mm
Supply voltage:	220V approx. / 50 Hz $\pm 5\%$
Current consumption:	0.5 Ampere
Max operating pressure:	6 bar
Type of fluid used:	Lubricated Air
Range of seal diameter :	20 To 200 mm
Control voltage:	24V DC $\pm 10\%$
Working pressure range	-90 TO 990 KPa
Test Method:	Air Leak Testing

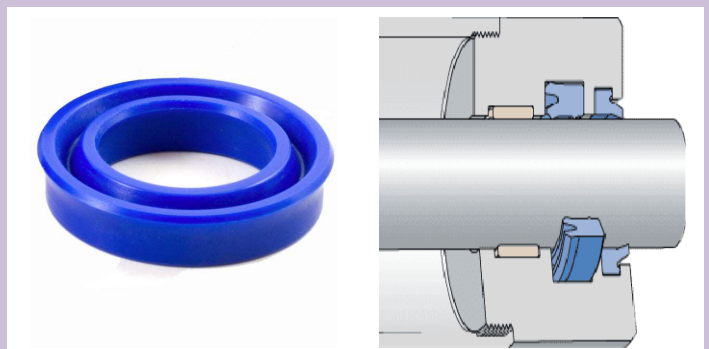
3.2 Advantages of Machine

1. Cost saving as it detects rejection inline.
2. Highly accurate.
3. Consistent with High Repeatability.
4. Low cycle time.
5. Comes with Poke-Yoke arrangement.
6. Ensures safety and avoids health hazards.
7. Environment friendly.
8. Individual alarm displaying arrangement.
9. PLC controlled system monitors complete working cycle.
10. Arrangement to collect NG parts.
11. Fitted with highly accurate FLOW TESTING UNITS.
12. Two hand operation, safety switches for door, safety relays, safety screws, LOTO switch and EMG equipments selectable as per safety standard requirements.
13. Inspection lamp & Fan can be provided with the machine.
14. Wide range of size from 20 mm to 200mm dia.
15. Wide range of pressure settings.

Purpose of Machine

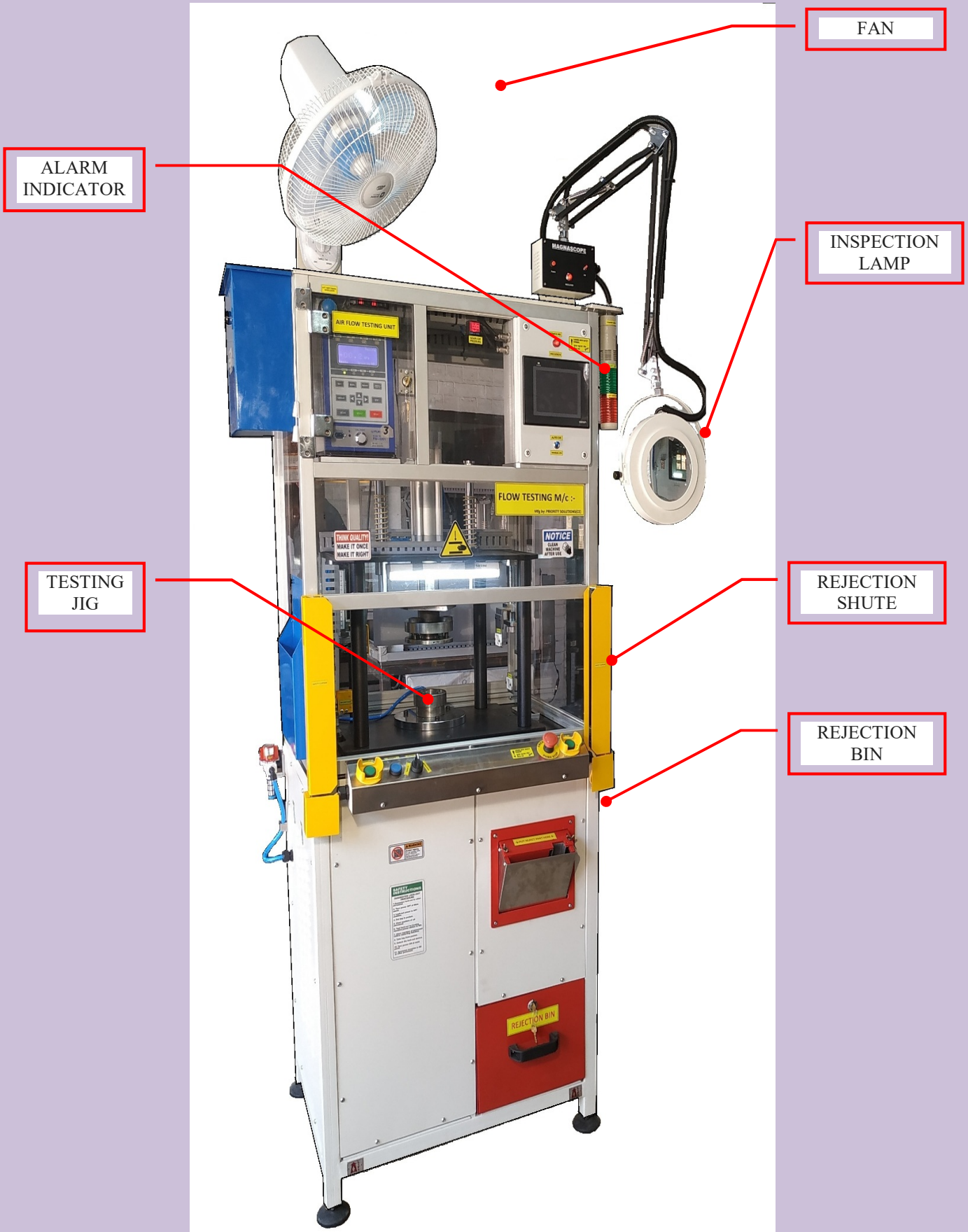
The machine is an manual loading and unloading machine, designed and built to check the presence of Air Leakage in the Oil Seals and then give signal for OK & NG seal .

The amount of Air Leakage that the machine is able to detect is very important for the functionality of the product and if in the leakage is higher in the Oil Seal is particularly dangerous for the functionality of the product where it is fixed.(see picture no. 4).



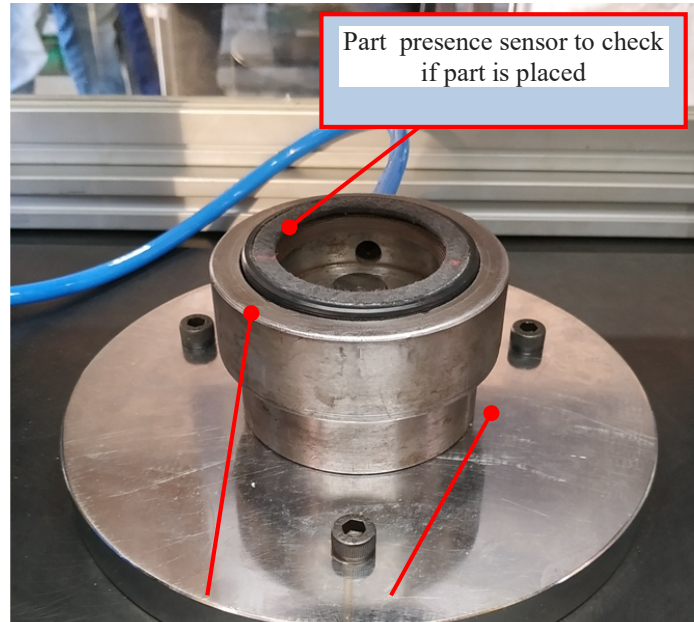
Composition of Machine

The photograph illustrates the general assembly of the machine.





FLOW TESTING UNIT



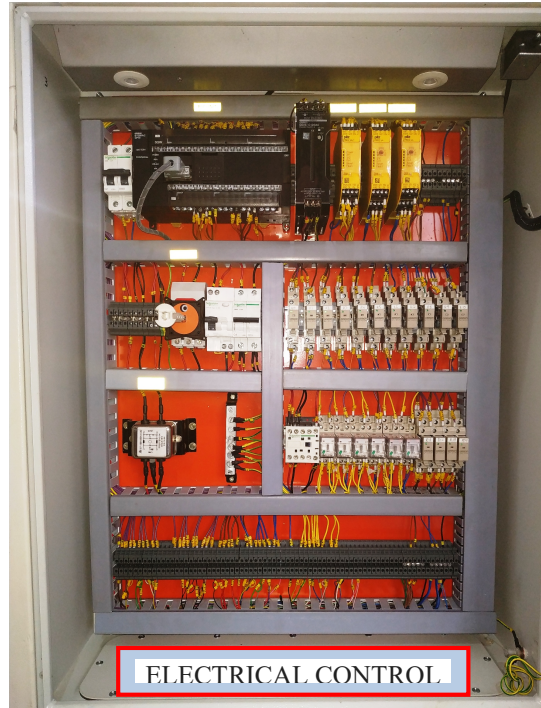
Second checking optional required in case of oil seals to check if seal is properly aligned in the test jig.



TWO HAND SWITCH AND EMERGENCY



PNEUMATIC PANEL



ELECTRICAL CONTROL

NO MORE REJECTIONS

